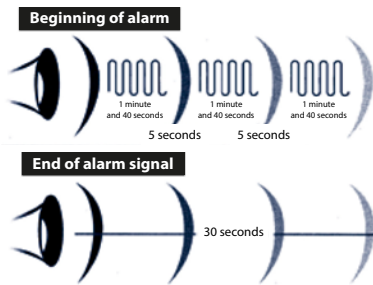


DESCRIPTION

SOLUTION for S.E.P. in SCHOOLS.



In the event of a major accident, the alarm is sounded by the following standard signal: modulated siren (increasing and then decreasing). This signal is made up of three sequences five seconds apart.

The ending of the alarm will be announced by a 30 seconds unmodulated signal from the siren.

S.E.P. VIA RADIO CONTROLLED MELODYS SOUNDER

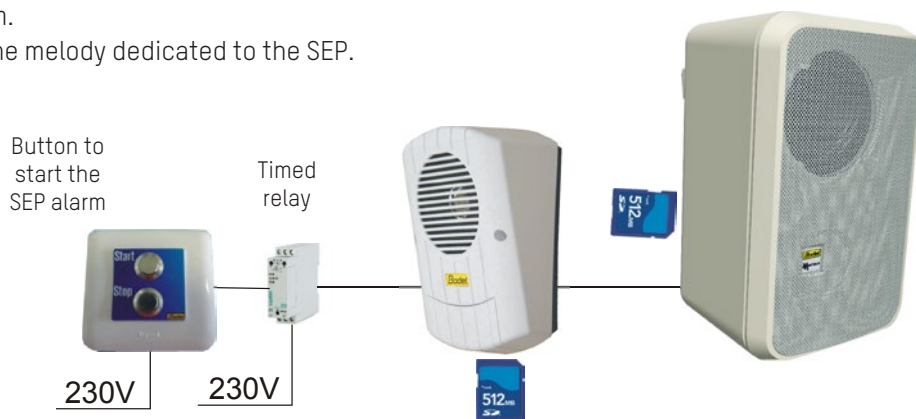
The Melodys sounder used for signaling beginning and end of classes broadcasts the SEP alarm signal recorded on a SD Card. The operation is controlled by the SIGMA master clock, its DHF transmitter and the SEP control buttons. Easy to install, the sounders can be powered by a 230V AC power source or a 24 V DC supply.



• **Recommendation** : check the number of actions (start/end of alert signal) to perform or the number of buttons to install. The Sigma master clock has only one external input therefore when at least 2 actions (start and end) or 2 button boxes are needed then the 3 external inputs option card (ref. 907542) must be added to the master clock.

SEP VIA WIRED MELODYS SOUNDER

- Starting of the alarm.
- Triggering of only one melody dedicated to the SEP.



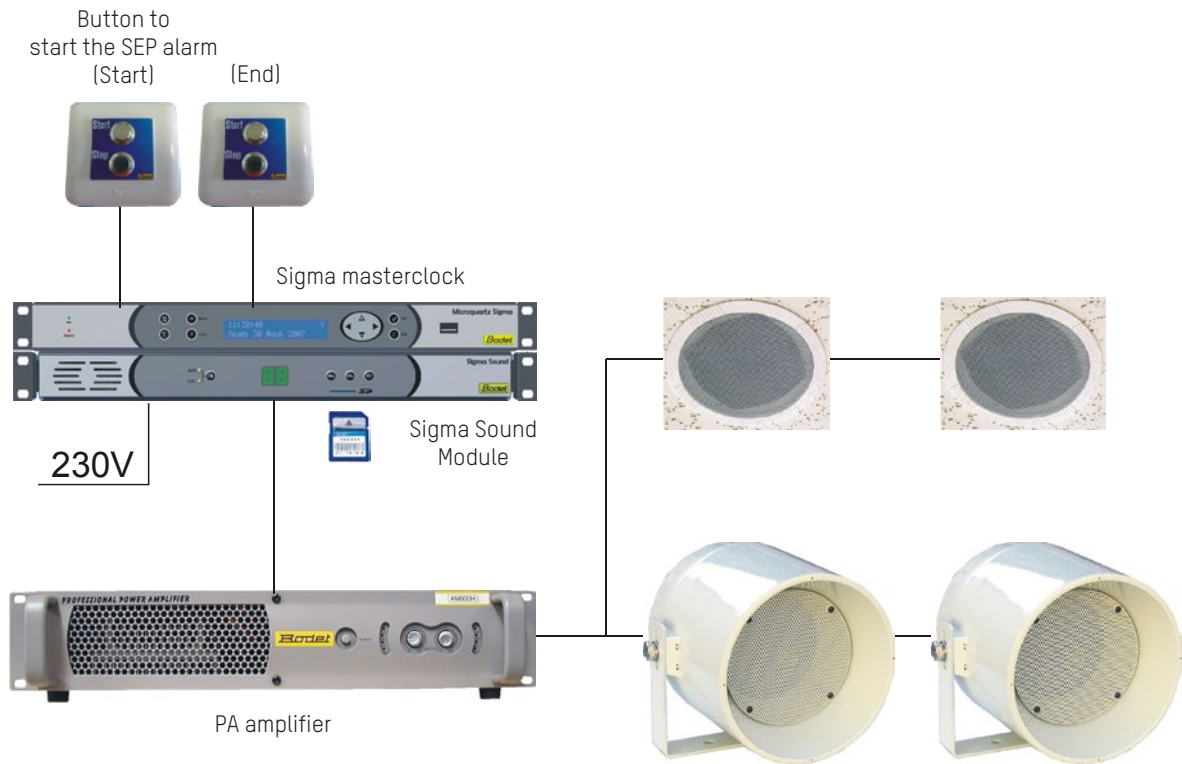
MELODYS

- Several versions for indoor, outdoor : recess mounting for indoor or high power for outdoor.
- 2 models: - MELODYS DHF: Wireless control of a melody among 16 by a Sigma masterclock.
- Wired MELODYS: Control of one melody (chosen among 16).
- 2 power supply types: - 100 to 240VAC $\pm 10\%$ 50/60Hz or Low voltage TBT 24VDC $\pm 5\%$.

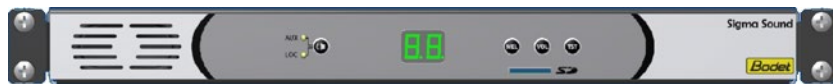
See the product page
>> www.bodet-time.com <<

S.E.P. VIA PUBLIC ADDRESS SYSTEM

The SIGMA SOUND module can broadcast the S.E.P. alarm through you own PA system as well as the class change signals.



SIGMA SOUND

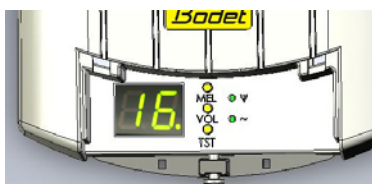


- External module for Public Address system.
- The Sigma Sound module allows the broadcast of melodies at set time to signal class change (schools), beginning/end of work or break time (factories) and also S.E.P. message through a PA system.
- Melodies can be chosen among the 16 pre-recorded melodies or by transferring 16 new melodies from an SD card (SD card reader slot in the front).

REFERENCE

- 508 474..... 6 S.E.P. ring tones on SD card
- 907 537..... Sigma Sound
- 907 542..... 3 inputs card.
- 907 544..... S.E.P. control buttons

Melody control buttons:



Sigma Sound control buttons:

