

*MELODYS*

## Flush mounted Melodys sounder



### *Instructions for installing and use*



[www.bodet-time.com](http://www.bodet-time.com)

BODET SA  
BP30001  
49340 TREMENTINES  
Tél: +33 241 71 72 99  
Fax: +33 2 41 71 72 01

Ref : 607626 E

Check the product for shipping damage on reception for any reservations to the carrier.

# Index

1 - MECHANICAL INSTALLATION	2
2 - ELECTRICAL INSTALLATION	3
2.1 - Configuration Wireless DHF/Wired	3
2.2 - « Wireless DHF » mode installation	3
2.3 - « Wired mode » installation	5
3 - SETTING THE MELODIES	7
4 - TECHNICAL CHARACTERISTICS	8



When proceeding to the installation, do not forget to select the triggering mode of the Melodys: «wireless DHF» or «wired», see page 3.

## 1 - MECHANICAL INSTALLATION

---

Drill the loudspeaker(s) bracket(s), 170 mm ø and 60 mm depth.

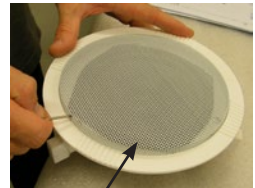
Install the control box.

Gently remove the grid of the loudspeaker(s) (1).

Connect the audio line(s) (40 m maximum) between the loudspeaker(s) (3) and the control box

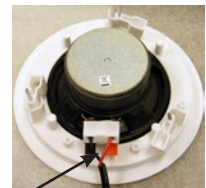
Mount the loudspeaker(s). Make sure that it (they) is(are) tightly attached to the bracket(s) in order to avoid vibrations.

**Imperative:** the equipment must be switched on only after fixing, programming of the DHF circuit number and reinstalling.



1

(4).



3

## 2 - ELECTRICAL INSTALLATION

### 2.1 - Configuration Wireless DHF/Wired

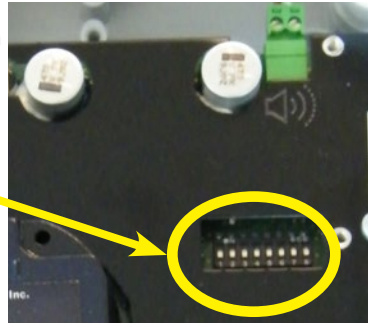
The DIP switch 2 is used to set the wireless Melodys in wired version.

Warning : the operation is different according to the mode being used: in "Wireless DHF" mode, the master clock Sigma selects one melody among 16 while in "Wired mode" the master clock turns on the Melodys which will play the last pre-selected (in the Melodys itself) melody.

DIP2 to position off = wired version

DIP2 to position on = wireless version

DIP switch positions



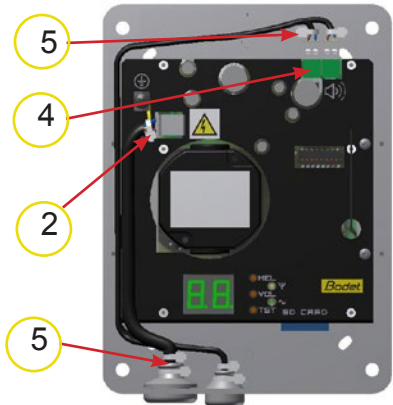
### 2.2 - « Wireless DHF » mode installation

In accordance with the model, 100-240VAC  $\pm 10\%$  50/60 Hz or 24 VDC, connect the appropriate power supply on the terminal strip (2).

As the device is a class II device, there is no earth connection.

Connect the audio line(s) between the loudspeaker(s) (3) and the control box (4) (40 m maximum with cable 2x0.75<sup>2</sup>).

The cables must be secured with the supplied tie-wrap (5) to prevent any stress on the terminal block.



For a 24V installation, verify that the voltage does not drop below the threshold (24V-10%). The section of the line should be fitted to its consumption and length.

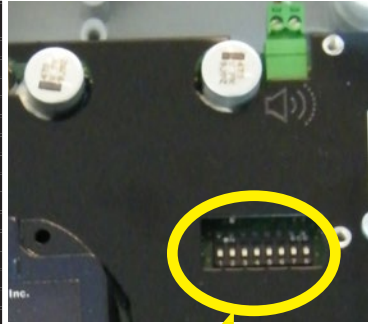
Melodys TBT 24V installation precaution: Maximum distance allowed			
Wire cross-sectional area (wire diameter)	0,5 <sup>2</sup> (8/10)	0,75 <sup>2</sup>	1,5 <sup>2</sup>
Number of Melodys on the line			
15	43 m	62 m	125 m
10	62 m	95 m	190 m
5	125 m	190 m	380 m

Important notes:

- 1 – The distance can be doubled by limiting the volume to 7.
- 2 – These distance limitations concern only one Melodys line; but it is possible to install several lines in parallel.

Define the address of the DHF sounder using DIP switches 5 to 8 (see table below) and refer to the Sigma master clock manual.

DHF circuit no	Dip 5	Dip 6	Dip 7	Dip 8
60	OFF	OFF	OFF	OFF
61	OFF	OFF	OFF	ON
62	OFF	OFF	ON	OFF
63	OFF	OFF	ON	ON
64	OFF	ON	OFF	OFF
65	OFF	ON	OFF	ON
66	OFF	ON	ON	OFF
67	OFF	ON	ON	ON
68	ON	OFF	OFF	OFF
69	ON	OFF	OFF	ON
70	ON	OFF	ON	OFF
71	ON	OFF	ON	ON
72	ON	ON	OFF	OFF
73	ON	ON	OFF	ON
74	ON	ON	ON	OFF
75	ON	ON	ON	ON



Beware: in DHF version the DIP switch 2 must be in the ON position. DIP switch positions

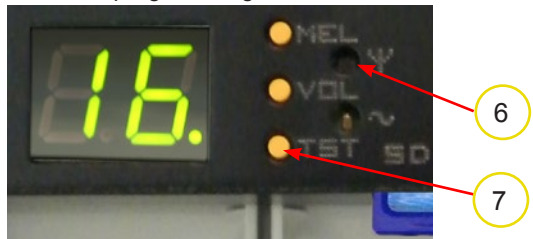
Reminder: several DHF sounders can be configured on the same address; in this case, they will all have the same programming.

On first start-up, the DHF sounder is in INIT mode (orange DHF LED (6) flashing).

Set the Sigma master clock to INIT mode (see the master clock manual). Once the receiver is initialised, the DHF LED is red to begin with and then green after reception of the DHF sounder commands from the master clock.

Note: the DHF sounder commands are sent every hour and on each modification of the programming.

To reset to INIT mode, simply press the TST key for 10 seconds.



Two LEDs indicate the functioning of the system :

- The “~” LED (A) indicates the presence of the power supply.
- The “Ψ” LED (B) is active during communication with the master clock.

Green, communication is OK,

Orange and fixed, the Melodys is just within the limit of DHF range, reception is uncertain,

Orange and flashing, the Melodys is in INIT mode,

Red, no DHF sounder commands received.



After the product has been switched on, it waits for an execution order from the master clock.

## 2.3 - « Wired mode » installation

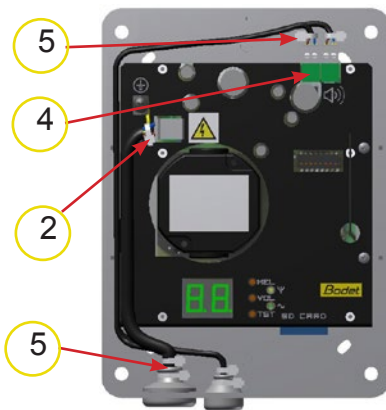
In accordance with the model, 100-240VAC  $\pm 10\%$  50/60 Hz or 24 VDC, connect the appropriate power supply on the terminal strip (2).

As the device is a class II device, there is no earth connection.

Connect the audio line(s) between the loudspeaker(s) (3) and the control box (4) (40 m maximum with cable 2x0.75<sup>2</sup>).

The cables must be secured with the supplied tie-wrap (5) to prevent any stress on the terminal block.

In « wired mode » (dip switch 2 in the OFF position) the power supply of the Melodys is what controls the ringing programmed by the master clock. The melody selected in the Melodys is played whenever the circuit is closed by the master clock.



24V DC or 100-240VAC  $\pm 10\%$  50/60 Hz power supply depending on the model.

Note: all the Melodys units must be of the same model.

If a 230V bell system has more than five sounders, use a contactor\*, see the above illustration.

\* e.g. type Merlin Gerin reference 15373.

If a 24V bell system has many sounders, verify that the voltage does not drop below the threshold (24V-10%). The section of the line should be fitted to its consumption and length.

Melodys TBT 24V installation precaution: Maximum distance allowed			
Wire cross-sectional area (wire diameter)	0,5 <sup>2</sup> (8/10)	0,75 <sup>2</sup>	1,5 <sup>2</sup>
Number of Melodys on the line			
15	43 m	62 m	125 m
10	62 m	95 m	190 m
5	125 m	190 m	380 m

Important notes:

1 – The distance can be doubled by limiting the volume to 7.

2 – These distance limitations concern only one Melodys line; but it is possible to

install several lines in parallel.

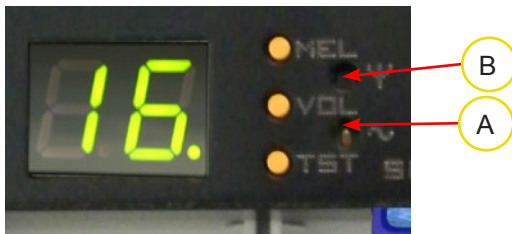
Imperative : the equipment must be switched on only after fixing, and reinstalling of the front panel.

Operation of the sounder in « wired mode » :

The sounder is controlled by any programmer.

- The “~” LED indicates the presence of the power supply.

When the product is switched on, the pre-selected melody is played.



### 3 - SETTING THE MELODIES

The Melodys sounder includes 16 melodies in the standard configuration.

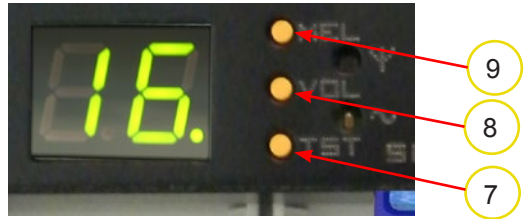
By default, melody number 16 is played.

To access the sounder controls, unscrew the screw (3) under the sounder and remove the access flap by pulling it forwards.

The “MEL” key is used to select a melody (from 1 to 16). This key also allows to change the melody playing.

The “VOL” key is used to adjust the volume from 1 to 8.

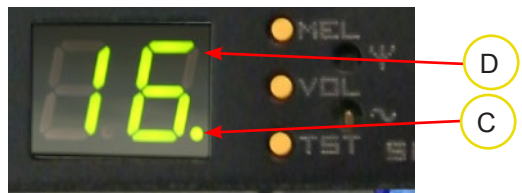
The “TST” key starts the test and stops a sounder. The volume is validated.



To adjust the volume of all the melodies at the same time:

- Press the “Vol” button for 10 sec,
- When “d5” is displayed select the volume level (from 1 to 8) by pressing the “Vol” button the appropriate number of time,
- Press “Tst” to adjust the volume for all the melodies.

Each time the melody is played, the number of the melody is displayed (D). The green dot (C) at the bottom right of the readout indicates that the melody being played is a melody contained in the memory of the Melodys system.



 **The Melodys sounder support SD card and SDHC card.**



**For the Lockdown messages we recommend the use of a BODET SD card. By using a card different from the one proposed by Bodet you become sole responsible for the proper operation of the Lockdown procedure.**

An “Optional” SD Card is available to record and play other melodies (mp3 file format).

The melodies on this SD Card replace the basic melodies of the sounder. They can be recorded directly by the user from a PC.

The 16 pre-recorded melodies of the Melodys can be replaced by new MP3 files recorded on a SD card.

The digital format of the audio files is MP3.



The names of the files on the SD Card must be 01.mp3 to 16.mp3.

It is possible to replace totally or partially the 16 melodies.

Each melody registered on the SD card will replace the existing melody. In case a melody is missing on the SD card the standard melody will be executed.

The melodies recorded on the memory card have to respect copyrights. Please refer to the current laws in your country.

## 4 - TECHNICAL CHARACTERISTICS

---

The MELODYS sounder complies with electromagnetic compatibility directive 89/336/EEC and R&TTE directive 1999/5/EEC.

The MELODYS sounder are designed for a residential, commercial or industrial environment.

They comply with the European standards :

EMC Directive 2004/108/EEC and Low Voltage Directive 2006/95/ EEC,  
EN 60950: Safety of Information Processing Devices.

EN 301-489-3 (EMC of radio products: emission and immunity).

EN 300-220-2 (Good use of the radio spectrum).

EN 55022: Information Processing Device emission standard,

EN 55024: Information Processing Device immunity standard.

DHF norm: NF S 87-500 C (single channel, 869.525 MHz, 500 mW).

- Power supply according to model:

- 100-240VAC  $\pm 10\%$  50/60 Hz,

- 24 VDC  $\pm 5\%$ .

- Dimensions : Loudspeaker H 60 mm x 190 mm  $\emptyset$   
Control box H 220 x W154 x D 78 mm.

- Parameter backup: permanent.

- Operating temperature: 0 to  $+50^{\circ}\text{C}$ .

- Protection index : Loudspeaker IP 30 – Control box IP 54.

### **CLEANING**

Use an anti-static product.

Never use alcohol, acetone or other solvents liable to damage the casing.

### **Warning :**



When proceeding to the installation, do not forget to select the triggering mode of the Melodys: «wireless DHF» or «wired», see page 3.



100% papier recyclé